

Depression and Anxiety Following Deep Brain Stimulation in Parkinson's Disease: Systematic Review and Meta-Analysis



Depressão e Ansiedade após Estimulação Cerebral Profunda na Doença de Parkinson: Revisão Sistemática e Meta-Análise

Maria Inês COUTO¹, Ana MONTEIRO^{1,2}, Ana OLIVEIRA^{1,2}, Nuno LUNET³, João MASSANO^{1,2,4}
Acta Med Port 2014 May-Jun;27(3):xxx-xxx

ABSTRACT

Introduction: Deep brain stimulation (DBS) is effective in advanced Parkinson's disease (PD), improving motor symptoms, fluctuations and quality of life. However, adverse psychiatric outcomes have been reported, albeit variably and in an unstandardized fashion. We aimed to summarize the published evidence on the outcomes of anxiety and depressive symptoms in Parkinson's disease patients following DBS, through systematic review and meta-analysis.

Material and Methods: PubMed was searched until May 2012 to identify studies assessing anxiety and depressive symptoms in PD patients who underwent bilateral DBS of the subthalamic nucleus (STN) or globus pallidus internus (GPi). Random effects meta-analyses were conducted for groups of at least three studies that were homogeneous regarding the design and the instruments used.

Results: 63 references were selected; 98.4% provided data on depression, and 38.1% on anxiety assessment scales. Two studies did not discriminate the target; from the remaining 61 references, short-term evaluation was performed in 37 (60.7%), mid-term in 36 (59.0%) and long-term in 5 (8.2%). Data on pre to postop variation was available in 57 (93.4%) reports and 16 (26.2%) presented STN-DBS versus different comparison groups: GPi-DBS ($n = 4$ studies, 25.0%), eligible for surgery ($n = 6$, 37.5%), and medical treatment ($n = 7$, 43.8%).

Discussion: Improvement of depression and anxiety is apparent after DBS, more pronounced in the short-term, an effect that seems to wane in later assessments. Concerning depression, STN-DBS shows superiority against medical treatment, but not when compared to eligible for surgery control groups. The opposite is apparent for anxiety, as results favor medical treatment over STN-DBS, and STN-DBS over eligible for surgery control group. Superiority of one target over the other is not evident from the results, but data slightly favors GPi for both outcomes.

Conclusion: The pattern and course of depressive symptoms and anxiety following DBS in PD is not clear, although both seem to improve in the short-term, especially depression following STN-DBS. Results are highly heterogeneous. Efforts should be carried out to standardize assessment procedures across centers.

Keywords: Parkinson's Disease; Deep Brain Stimulation; Anxiety; Depression; Meta-Analysis.

RESUMO

Introdução: A estimulação cerebral profunda (ECP) é eficaz na doença de Parkinson (DP) avançada, melhorando sintomas motores, flutuações e a qualidade de vida. No entanto, têm sido reportados efeitos adversos psiquiátricos, mas de uma forma variável e não padronizada. O objectivo deste artigo é analisar e sumarizar a evidência publicada sobre sintomas depressivos e ansiedade em doentes com DP após ECP, através de revisão sistemática e meta-análise.

Material e Métodos: A PubMed foi pesquisada até Maio 2012 para identificar os estudos que avaliaram sintomas depressivos e ansiedade em doentes com doença de Parkinson submetidos a estimulação cerebral profunda bilateral do núcleo subtalâmico (NST) ou globo pálido interno (GPi). Foram feitas meta-análises com modelo de efeitos aleatórios para grupos de pelo menos três estudos homogêneos em relação ao desenho e instrumentos utilizados.

Resultados: Foram selecionadas 63 referências; 98,4% continham dados relativos a escalas de avaliação de depressão e 38,1% relativos a ansiedade. Dois estudos não discriminavam o alvo usado; nos restantes 61 foi feita avaliação de curto prazo em 37 (60,7%), de médio prazo em 36 (59,0%) e de longo prazo em 5 (8,2%). Foram encontrados dados sobre variação pré/pós operatória em 57 (93,4%) estudos e 16 (26,2%) continham dados comparando ECP-NST versus outros grupos: ECP-GPi ($n = 4$ estudos, 25,0%), elegíveis para cirurgia ($n = 6$, 37,5%), e tratamento médico ($n = 7$, 43,8%).

Discussão: É aparente a melhoria de depressão e ansiedade após ECP, sobretudo a curto prazo, efeito que tende a esbater-se em avaliações posteriores. Em relação à depressão a ECP-NST mostrou-se superior ao tratamento médico, mas não em comparação com o grupo de controlo elegível para cirurgia. Verificou-se o resultado oposto para a ansiedade, uma vez que os resultados favorecem o tratamento médico sobre a ECP-NST, e esta sobre o grupo de elegíveis para cirurgia. Não é evidente a superioridade de um alvo sobre o outro, mas os dados favorecem ligeiramente o GPi para ambos os tipos de sintomas.

Conclusões: O padrão e curso dos sintomas depressivos e ansiedade após ECP na DP não são claros, mas ambos parecem melhorar no curto prazo, especialmente a depressão após a ECP-NST. Os resultados são bastante heterogêneos. Devem ser estimulados esforços no sentido de haver padronização de procedimentos de avaliação nos vários centros.

Palavras-chave: Doença de Parkinson; Estimulação Cerebral Profunda; Ansiedade; Depressão; Meta-Análise.



1. Department of Clinical Neurosciences and Mental Health. Faculty of Medicine. University of Porto. Porto, Portugal.

2. Movement Disorders and Functional Surgery Unit, Centro Hospitalar São João. Porto, Portugal.

3. Department of Clinical Epidemiology, Predictive Medicine and Public Health. University of Porto. Porto, Portugal.

4. Department of Neurology, Hospital Pedro Hispano/ULS Matosinhos. Matosinhos, Portugal.

Recebido: 24 de Outubro de 2013 - Aceite: 17 de Março de 2014 | Copyright © Ordem dos Médicos 2014

INTRODUCTION

Parkinson's disease (PD) is a common, disabling neurodegenerative condition characterized by motor and non-motor symptoms, including cognitive and behavioral.¹ Deep brain stimulation (DBS) has proved effective in advanced PD, as motor symptoms, fluctuations, disability and quality of life improve in patients carefully selected for the procedure.²⁻⁴ Recently, the efficacy of DBS has been also demonstrated in PD with early motor complications,⁵ suggesting that the universe of potential surgical candidates is wider than previously established. However, concerns have been raised about potential cognitive and psychiatric adverse effects in PD patients following DBS, and some data even suggested that consequences might vary according to the chosen target, namely the subthalamic nucleus (STN) or the globus pallidus internus (GPi).⁶⁻⁸ On the other hand, several studies found no significant adverse psychiatric outcomes following DBS in PD.⁹⁻¹¹ Accurate knowledge on this theme is paramount, as several authors have demonstrated that non-motor symptoms (NMS), namely depression and anxiety, impact significantly on the quality of life and illness-related distress of PD patients.¹²⁻¹⁴ In fact, the importance of NMS in PD led to the recent proposal of an integrated assessment approach as part of the clinical routine.¹⁵ Nonetheless, the outcomes concerning depression and anxiety in PD after DBS remain incompletely clarified, as several different assessment methods have been used, and results have been reported under diverse formulas. Data have been reviewed systematically in two previous publications concerning psychiatric outcomes in patients undergoing bilateral DBS, but one study published in 2006 was limited to patients having STN-DBS,¹⁶ while the other, published in 2007, jointly analyzed results in several disorders, including PD;¹⁷ in addition, new research data in PD have been published since then, thus justifying re-appraisal of findings. We aimed at systematically reviewing the literature and summarizing the evidence by meta-analysis, in order to establish state of the art knowledge concerning anxiety and depression following DBS in PD.

MATERIAL AND METHODS

PubMed was searched from inception until May 2012, using the search expression “(“deep brain stimulation” OR “subthalamic stimulation” OR (stimulation AND (“subthalamic nucleus” OR “globus pallidus”))) AND (parkinson disease OR parkinson's disease)”, to identify studies that assessed anxiety and depressive symptoms in PD patients who underwent bilateral DBS.

A total of 3 276 references were screened by one of 3 reviewers (MIC, AM, AO), following the same exclusion criteria defined a priori, as follows: 1) language other than English, Portuguese and Spanish; 2) non-human data; 3) disorders other than PD; 4) studies not concerning DBS; 5) studies not conveying original data (reviews, systematic reviews, meta-analysis, book chapters, letters to the editor with no original data); 6) case reports; and 7) reports with no data on the outcomes of interest, namely: 7.1) no clinical

outcome at all (e.g. image methods for target location); 7.2) clinical outcome other than psychiatric; 7.3) psychiatric outcome not objectively assessed by psychometric instrument. This approach intended to include only references with objective and potentially comparable data. References were then restricted to those reporting on bilateral stimulation surgery performed on the most relevant DBS targets in PD (STN and GPi), with no previous lesion surgery, and only depression and anxiety were considered psychiatric outcomes. Study design details were used to exclude publications not enrolling participants consecutively or randomly selected. One additional reference was excluded as it focused on DBS “on” *versus* “off” comparison only. Duplicate references were eliminated by comparing titles, authors, centers and sample details. A total of 63 studies^{3,10,18-78} assessing depression and/or anxiety following DBS (STN and/or GPi) in consecutive samples of PD patients were found. The flow-chart depicting reference selection and exclusion is presented in supplementary material online (Appendix 1).

Data on depression and anxiety assessment scales were collected from the eligible studies along with DBS target and follow-up time. Five aspects were considered in order to group and analyze data: 1) Main outcome: depression or anxiety; 2) DBS target: STN and GPi were individually considered; 3) Follow-up time: three main periods were considered: up to 6 months after surgery (short-term follow-up); between 6 months and 3 years (mid-term follow-up); and more than 3 years (long-term follow-up); within each defined time period we selected the data referring to the longest follow-up for analysis, whenever data was available for different moments after the intervention; 4) Assessment scale(s) employed; 5) Study design: two main types of information were sought: the change of variables of interest with the exposure to the procedure (follow-up studies with pre- and post-operative data) and the difference between groups concerning the response to DBS (studies with different types of comparators).

Information on these five aspects is detailed in supplementary material online (Appendix 2) for each one of the 63 references. Eleven of them^{3,22,36,52,61,67,69,70,73,76,78} presented data in a non-comparable way, with a total of 52 references allowing quantitative analysis.

DBS *versus* controls and STN-DBS *versus* GPi-DBS were considered comparisons of interest, so in studies with other comparators only the information concerning the DBS group was collected. “On” state evaluation was considered in studies reporting “on” *versus* “off” state comparison. In partial duplicates with patients overlapping but with different assessment scales,^{39,53} follow-up time^{20,31} or comparison groups,⁷⁷ a selection of relevant data was performed for each one, and only specific duplicated information was excluded.

Forest-plots were used to summarize the findings from all eligible studies and random effects meta-analysis (DerSimonian and Laird method) was performed for groups

of at least three comparable studies. The I^2 statistic was used to quantify heterogeneity. Original data concerning different strata from the same studies were assumed as different samples, strata being defined by age,⁴⁷ single or multiple recording electrodes,⁴⁴ and center (in one collaborative study).⁷⁷ The pre to postoperative variation was calculated from "postop score – preop score". Differences between STN-DBS and the comparison groups were calculated by "STN score – comparator score". The effect size (ES) and corresponding 95% confidence interval (CI) were extracted whenever provided in the original reports or computed using the published data considering matched and independent samples, respectively (adopted formulas detailed in appendix 2 online). Test-retest coefficients have been collected for the several psychometric instruments.⁷⁹⁻⁹⁰

RESULTS

From the original 63 references, nearly all ($n = 62$, 98.4%) provided data on depression, and 24 (38.1%) on anxiety assessment scales. STN-DBS was performed in 60 studies (95.2%) and GPI-DBS in 9 (14.3%); the overlap between target groups corresponds to STN *versus* GPI comparison studies and two additional reports^{3,76} that did not discriminate data by target, thus not suitable for comparison. From the remaining 61 references, short-term evaluation was performed in 37 (60.7%), mid-term in 36 (59.0%) and long-term in 5 (8.2%). Data on pre to postop variation was available in 57 (93.4%) reports and 16 (26.2%) presented STN-DBS *versus* different comparison groups: the comparators were groups of patients submitted to GPI-DBS (4 studies, 25%), eligible for surgery (EFS) (6 studies, 37.5%) and medical treatment (MT) (7 studies, 43.8%). The results on depression and anxiety assessment scales from the 52 comparable studies are described henceforth.

Depression:

a) Pre – postop variation:

i) STN-DBS (Fig.s 1 and 2):

1. Short-term follow-up: meta-analysis was performed on Beck Depression Inventory (BDI), Hamilton Depression Rating Scale (HDRS) and Montgomery-Åsberg Depression Rating Scale (MADRS) data. Summary effect size (ES) regarding BDI samples pointed to improvement (-3.05 , $I^2 = 68.8\%$). Only slight improvement occurred in the other groups, with $ES = -0.286$ for HDRS ($I^2 = 70.5\%$) and $ES = -0.763$ for MADRS ($I^2 = 0\%$). Improvement is apparent in all the remaining samples, with the only exception of one Geriatric Depression Scale (GDS) sample.
2. Mid-term follow-up: meta-analysis was performed on BDI and MADRS data only, with summary ES showing very slight improvement, along with high heterogeneity of the results: -0.37 ($I^2 = 72.1\%$) and -0.636 ($I^2 = 79.1\%$), respectively. In the remaining samples, four showed improvement and depression levels worsened after surgery in five.
3. Long-term follow-up: meta-analysis was performed

only on BDI data. Summary ES indicated very slight depression improvement: -0.222 ($I^2 = 40.9\%$). Additionally, the Zung-d sample showed improvement and the remaining Hospital Anxiety and Depression Scale – depression part (HAD-d) sample worsened.

GPI-DBS (Fig. 3):

4. Short-term follow-up: meta-analysis was conducted for BDI data and summary ES revealed depression improvement, despite high heterogeneity (summary $ES = -3.101$, $I^2 = 57.9\%$). The remaining two samples showed improvement as well.
5. Mid-term follow-up: depression, as assessed by the several instruments, improved in all the three samples.

b) STN *versus* comparator (Fig. 4):

MT group:

1. Short-term follow-up: two samples (assessed with MADRS and Zung-d) showed a trend towards medical treatment superiority. The remaining seven favored STN-DBS.
2. Mid-term follow-up: both groups favored STN-DBS.

EFS group:

3. Short-term follow-up: in this single MADRS sample, medical treatment was superior.
4. Mid-term follow-up: two samples (BDI and MADRS) slightly favored STN-DBS. The remaining three samples (from HAD-d and also BDI and MADRS groups) pointed to medical treatment superiority, a tendency that is stronger in HAD-d sample.

GPI group:

5. Short-term follow-up: one BDI sample favored STN and the other one, along with the HDRS sample, favored GPI-DBS.
6. Mid-term follow-up: both BDI samples showed GPI-DBS superiority. Conversely, in the HDRS sample, STN-DBS was superior.

Anxiety

Pre – postop variation:

STN-DBS (Fig. 5):

7. Short-term follow-up: one single sample from State and Trait Anxiety Inventory – Trait part (STAI-t) group revealed anxiety worsening following STN-DBS, with all the remaining studies showing improvement after the intervention.
8. Mid-term follow-up: meta-analysis was performed on State and Trait Anxiety Inventory – State part (STAI-s) and STAI-t data. Summary ES demonstrated slight anxiety improvement in STAI-s group and moderate worsening in STAI-t group: -0.930 ($I^2 = 0\%$) and 1.595 ($I^2 = 64.2\%$), respectively. Hospital Anxiety and Depression Scale – Anxiety part (HAD-a) single sample showed worsening. The remaining samples presented anxiety improvement.
9. Long-term follow-up: STAI-t single sample showed no change. Additionally, one sample assessed by

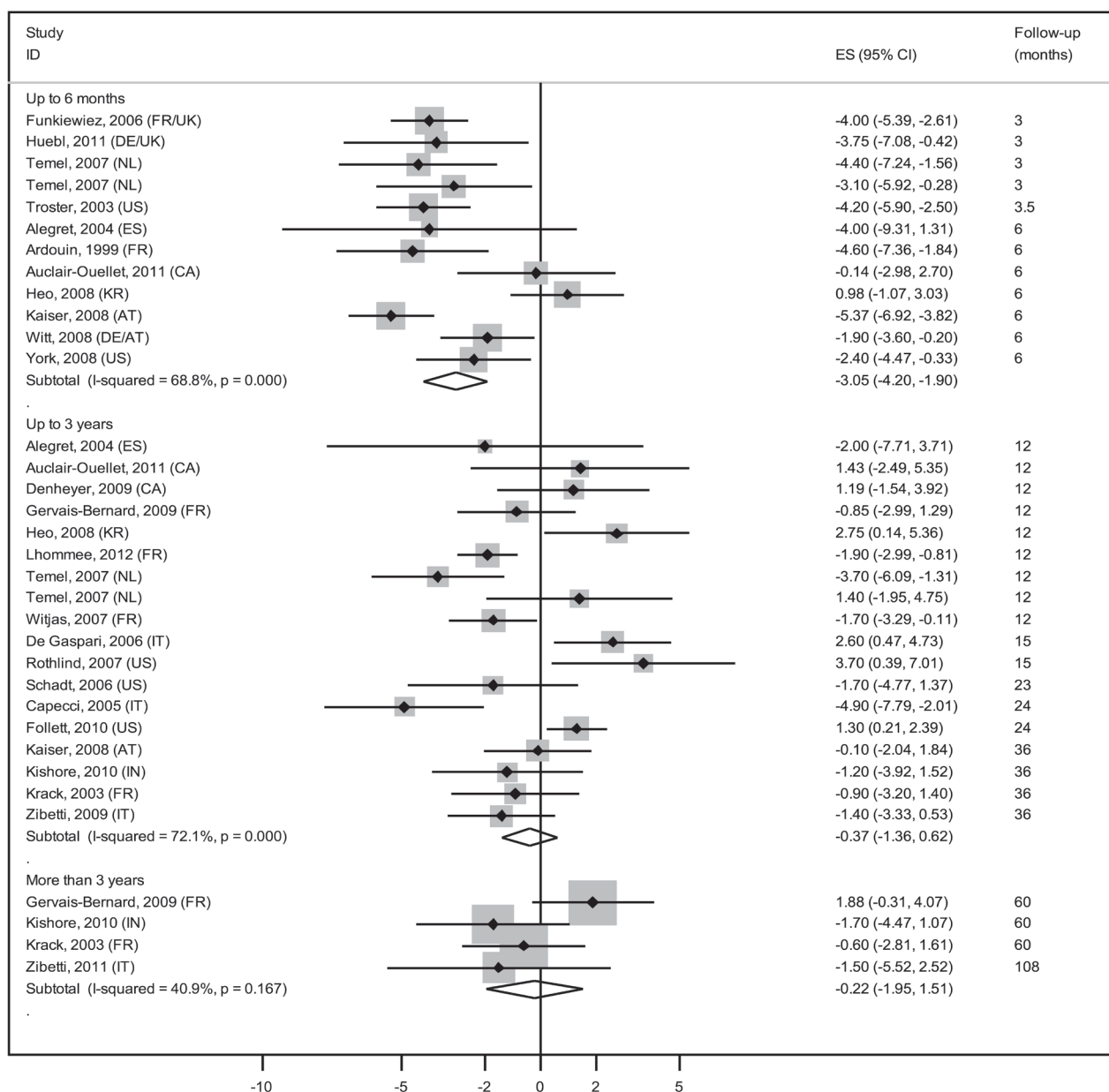


Figure 1 - Beck Depression Inventory (BDI) forest-plot. BDI results following subthalamic stimulation with data grouped and analyzed by follow-up time periods. Effect size and 95% confidence interval are presented for each sample. Overall measure is presented for each time period.

HAD-a worsened and the remaining two (STAI-s and Zung-a groups) improved.

GPI-DBS (Fig. 3):

10. Short-term follow-up: the only existing sample performed Beck Anxiety Inventory (BAI) and anxiety seemed to improve.
11. Mid-term follow-up: the only existing sample performed STAI-s and STAI-t and both improved.

c) STN versus comparator (Fig. 4):

MT group:

1. Short-term follow-up: the single BAI sample results favored STN-DBS. The remaining groups apparently showed medical treatment superiority.

EFS group:

2. Short-term follow-up: the only existing sample performed Association for Methodology and Documentation in Psychiatry – Anxiety part (AMDP-AT) and the results favored STN-DBS.
3. Mid-term follow up: one sample from STAI-s group favored medical treatment. The remaining two samples (from HAD-a and STAI-t groups) pointed towards STN-DBS superiority.

Gpi group:

4. Mid-term follow-up: the only existing sample revealed GPI-DBS superiority, as assessed by the STAI-s and STAI-t.

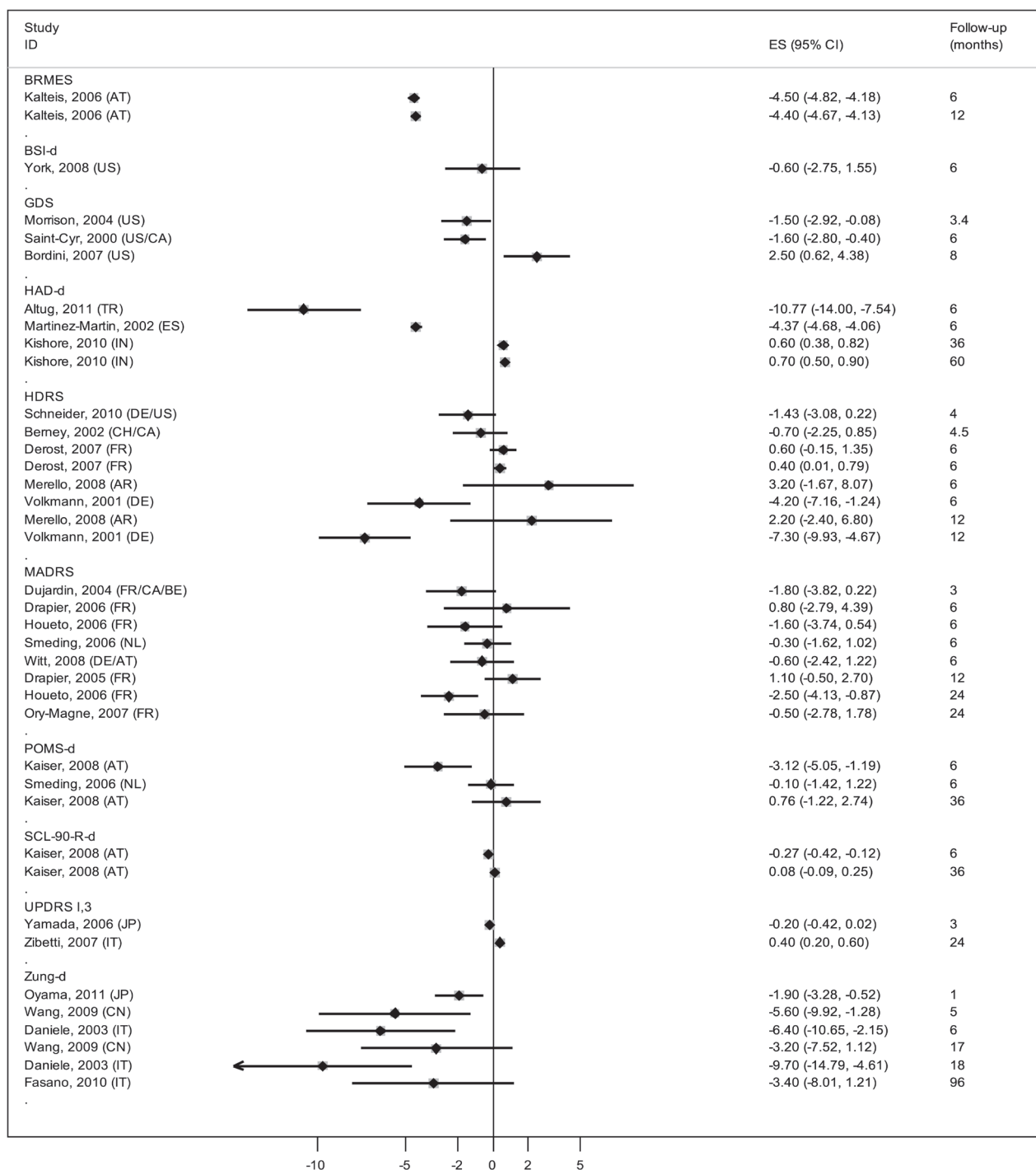


Figure 2 - Other depression psychometric scales forest-plot. Depression assessment results following subthalamic stimulation with data grouped and analyzed by psychometric instrument and sorted by ascending follow-up time. Effect size and 95% confidence interval are presented for each sample.

Abbreviations: BRMES: Bech-Rafaelson Melancholia Scale; BSI-d: Brief Symptom Inventory – depression part; GDS: Geriatric Depression Scale; HAD-d: Hospital Anxiety and Depression scale – depression part; HDRS: Hamilton Depression Rating Scale; MADRS: Montgomery-Åsberg Depression Rating Scale; POMS-d: Profile Of Mood States – depression part; SCL-90-R-d: Symptom Checklist 90 Revised – depression part; UPDRS I,3: Unified Parkinson's Disease Rating Scale, part I, item 3; Zung-d: Zung self-rating depression scale.

DISCUSSION

Overall, objectively assessed symptoms of depression and anxiety apparently improve after DBS, with effects being more pronounced in the short-term and becoming weaker with longer follow-up. Nonetheless, results are highly heterogeneous, both across studies and psychometric instruments. Concerning depression, STN-DBS shows

superiority against medical treatment, but not when compared to eligible for surgery control groups, especially in the short-term. The opposite effect occurs for anxiety, as the results favor medical treatment over STN-DBS, and STN-DBS when compared with eligible for surgery control group. Superiority of one target over the other is not evident from the results, due to significant heterogeneity of findings

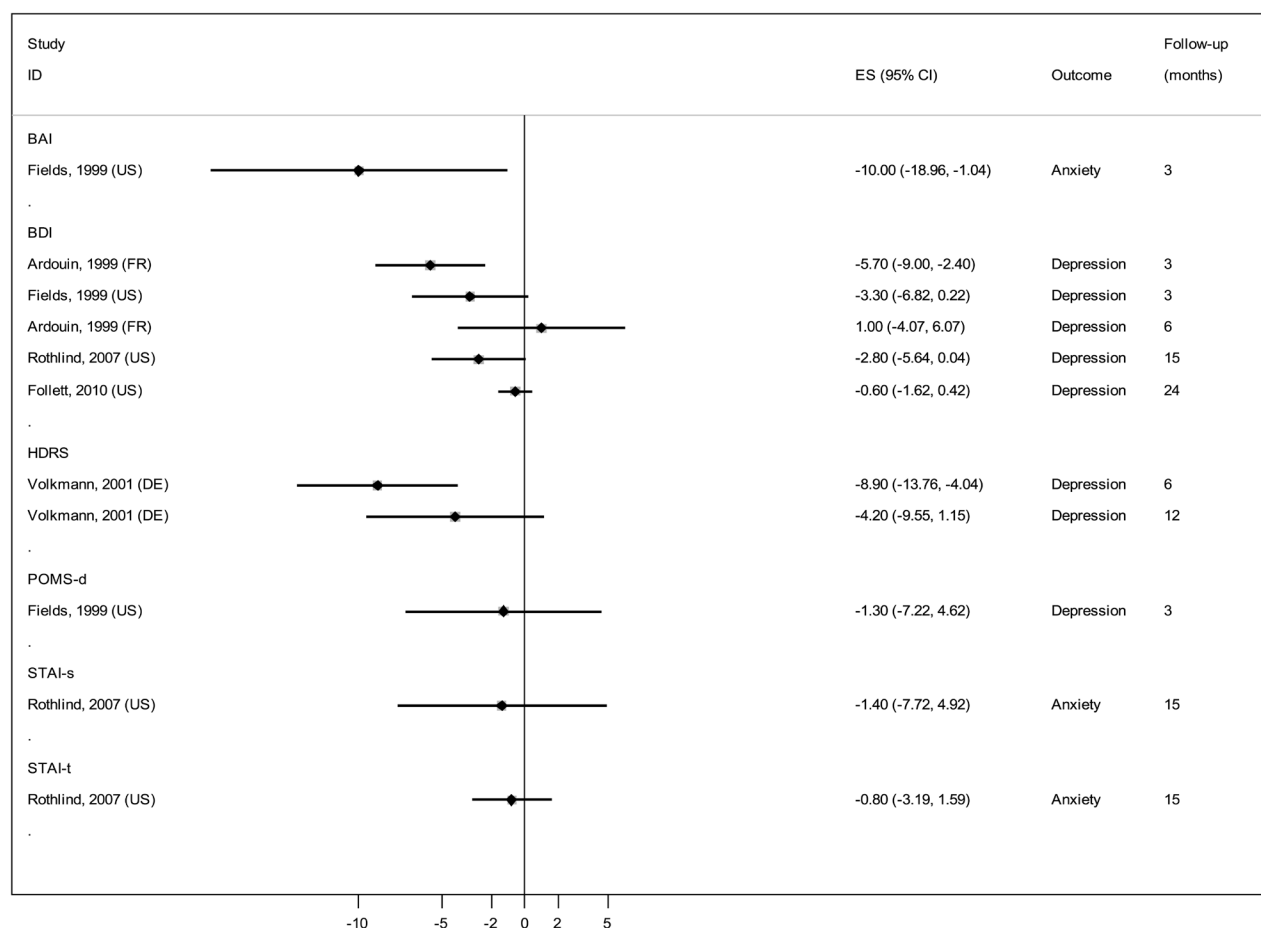


Figure 3 - GPI stimulation outcomes forest-plot. Depression and anxiety assessment results following pallidal stimulation with data grouped and analyzed by psychometric instrument and sorted by ascending follow-up time. Effect size and 95% confidence interval are presented for each sample.

Abbreviations: BAI: Beck Anxiety Inventory; BDI: Beck Depression Inventory; HDRS: Hamilton Depression Rating Scale; POMS-d: Profile Of Mood States – depression part; STAI-s: State and Trait Anxiety Inventory – state part; STAI-t: State and Trait Anxiety Inventory – trait part.

and paucity of data, but overall findings slightly favor GPI for both outcomes.

Among the included comparison studies, two randomized clinical trials on STN-DBS *versus* MT and STN-DBS *versus* GPI-DBS were found. Witt and coworkers¹⁰ conducted a randomized multicenter trial comparing best medical treatment (BMT) and bilateral STN-DBS, with depression and anxiety assessments as specific secondary outcomes. They concluded in favor of DBS safety at short-term follow-up (6 months), in carefully selected patients. The authors adopted “major psychiatric illness - such as history of or current psychosis or history of or current severe depression diagnosed by a psychiatrist” as exclusion criteria. A recent randomized multicenter clinical trial compared STN-DBS and GPI-DBS,²⁹ and the authors found a modest difference between the two groups favoring GPI-DBS with regard to depression. The results from both randomized studies conform to our general findings.

From the 63 included references, 33 (52.4%) were published since 2007, when the most recent meta-analysis to the best of our knowledge was performed, highlighting the need of evidence re-appraisal. The present work focused

on depression and anxiety following bilateral DBS in PD, objectively assessed by psychometric instruments, thus avoiding bias due to purely subjective clinical evaluation. In many of the excluded references, information was reported on DBS side effects (including psychiatric), without a standard definition of the clinical outcomes (concepts such as “slight disturbance of humor” or “mild depression” without further specification are hardly comparable). Additionally, this type of result contains no reference to the potential amelioration of any preoperative mild depressive symptoms following DBS. Therefore, in the present systematic review, the evaluation of the overall depression and anxiety levels following DBS was intended.

We speculate that the differences between STN-DBS, BMT and EFS groups might not be completely related to the effects of the therapeutic intervention by itself. In our 10-year experience with DBS in PD, we observed that patients who fail to meet the criteria for DBS frequently become depressed (unpublished data). A similar effect could occur with patients allocated to BMT, as opposed to those having DBS or EFS (who can eventually decide to have surgery) in clinical trials. On the other hand, anxiety might increase

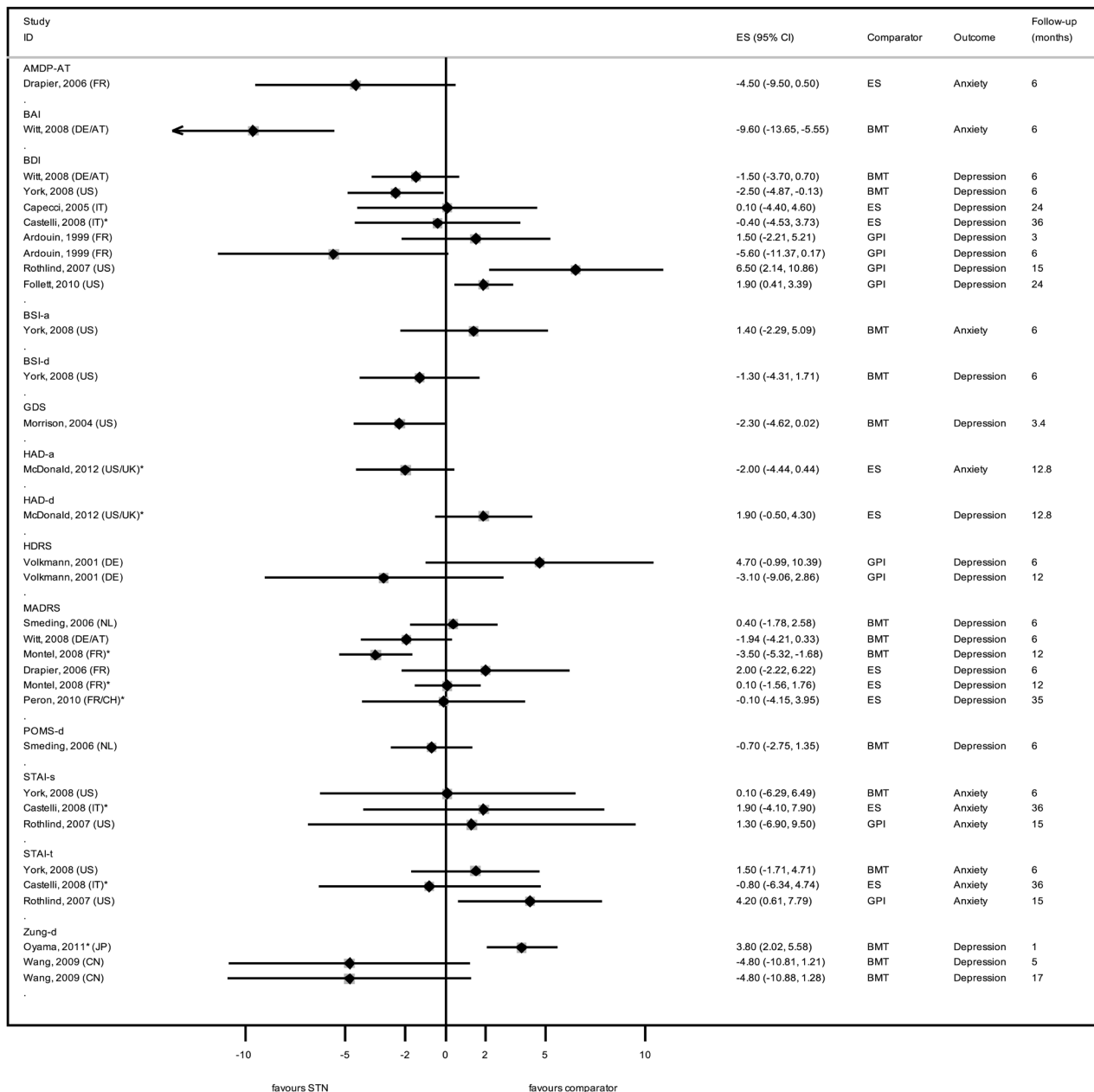


Figure 4 - Subthalamic stimulation *versus* comparators forest-plot. Depression and anxiety comparison results following subthalamic stimulation *versus* comparison groups. Data was grouped and analyzed by psychometric instrument and sorted by ascending follow-up time. Effect size and 95% confidence interval are presented for each sample.

Abbreviations: AMDP-AT: Association for Methodology and Documentation in Psychiatry – anxiety part; BAI: Beck Anxiety Inventory; BDI: Beck Depression Inventory; BSI-a: Brief Symptom Inventory – anxiety part; BSI-d: Brief Symptom Inventory – depression part; GDS: Geriatric Depression Scales; HDRS: Hamilton Depression Rating Scale; POMS-d: Profile Of Mood States – depression part; STAI-s: State and Trait Anxiety Inventory – state part; STAI-t: State and Trait Anxiety Inventory – trait part.

in patients undergoing surgery due to the perceived risks but also expectations related to possible benefits. This would explain higher anxiety levels in the DBS groups. In any event, currently available data does not allow further exploration of these hypotheses.

One might also wonder about possible bias related to dropouts by suicide, since postoperative outcomes would then be wrongly estimated.^{10,28,29,33,35,65} However, a large multicenter study⁹¹ found that the completed suicide rate following subthalamic DBS in PD is less than 0.5%, suggesting that suicide occurrences are unlikely to influence

data significantly in this regard.

We found that there are no long-term studies comparing the several therapeutic strategies for PD that adequately report objective data concerning anxiety and depression. Moreover, no long-term studies approaching this issue in GPI-DBS were found, and even short- and mid-term information regarding this target relies only in a few published studies. From the 63 references included only 9 (14.3%) reported on GPI-DBS. Therefore, there is a clear imbalance between the number of studies published in STN and GPI reporting objective psychometric data, thus limiting

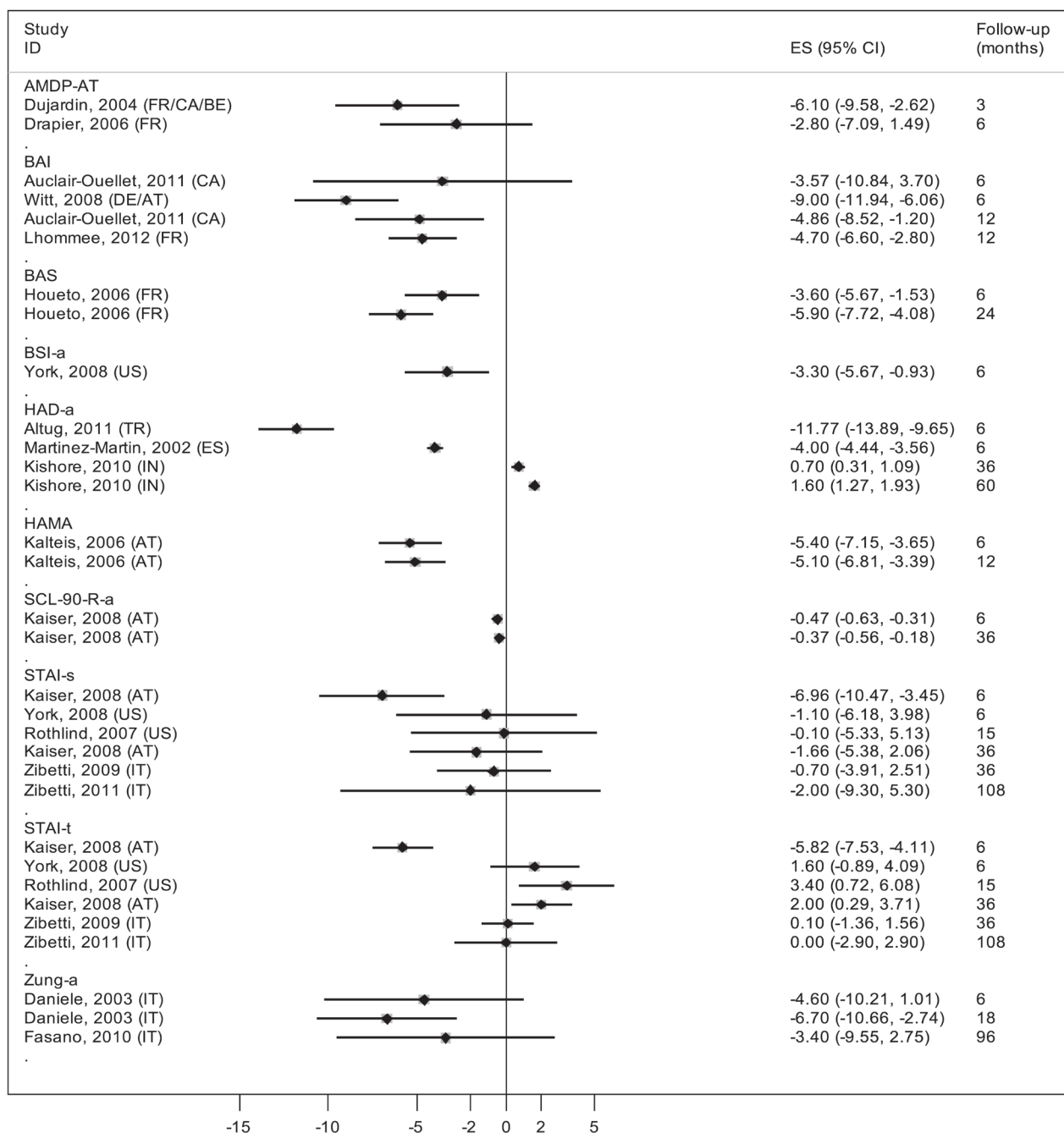


Figure 5 - Anxiety psychometric scales forest-plot. Anxiety assessment results following subthalamic stimulation with data grouped and analyzed by psychometric instrument and sorted by ascending follow-up time. Effect size and 95% confidence interval are presented for each sample.

Abbreviations: AMDP-AT: Association for Methodology and Documentation in Psychiatry – anxiety part; BAI: Beck Anxiety Inventory; BAS: Brief Scale for Anxiety; HAD-a: Hospital Anxiety and Depression scale – anxiety part; HAMA: Hamilton Anxiety scale; SCL-90-R-a: Symptom Checklist 90 Revised; STAI-s: State and Trait Anxiety Inventory – state part; STAI-t: State and Trait Anxiety Inventory – trait part; HDRS: Hamilton Depression Rating Scale; POMS-d: Profile Of Mood States – depression part; Zung-a: Zung self-rating anxiety scale, ascending follow-up time. Effect size and 95% confidence interval are presented for each sample.

the strength of any comparative analysis. Measuring the outcome of either target could be important, since it has been suggested that patients undergoing either STN-DBS or GPI-DBS might fare differently with regard to mood following surgery.²⁹ This could be important in order to tailor the procedure (i.e. target choice) for each patient, considering the individual psychopathological profile.

CONCLUSIONS

The conclusions of the present systematic review are naturally limited by the small amount and specificities of the available publications, namely taking into account that most of the investigations do not have a comparator, and the heterogeneity of methods and presentation of the findings. An important issue identified by this systematic review is the wide range of psychometric instruments used in the

setting of DBS in PD, with a total of 11 scales for depression and 10 for anxiety, considering those with quantitative and comparable results only. We emphasize that the high number of instruments reported, some of them involving a small number of subjects, limits the robustness of any conclusions extracted from the results. Thorough analysis of available psychometric instruments might contribute to the rational choice of scales to use, by narrowing the number of options. For example Williams and collaborators⁹² have recently studied 9 depression assessment scales for use in PD patient populations. They concluded that the instruments analyzed show validity provided that specific cutoff values are used, with the exception of the item "depression" of Unified Parkinson's Disease Rating Scale⁹² and they suggest that the 30-item GDS could be the most balanced choice in PD.⁹²

In summary, no definitive conclusions can be drawn from this meta-analysis, although the available data suggests that depressive symptoms and anxiety improve following DBS at short-term, despite the significant heterogeneity of published results. Evidence is more ample concerning the improvement of depressive symptoms following STN-DBS. Our findings are consistent with the notion that DBS in PD is a safe procedure with regard to depression and anxiety, regardless of the target chosen. It seems clear that

organized scientific efforts should be carried out in order to reach consensus and issue recommendations on the use of a small number of validated scales that would allow proper assessment and reporting of data in this setting. Recent evidence suggests that non-motor symptoms in PD fluctuate, namely psychiatric.⁹³ Thus, it could also be important to define the importance of accurate assessment of the severity of these symptoms both in "on" and "off" states, and their influence on the quality of life before and after DBS.

CONFLICTS OF INTEREST

The authors have no competing interests to declare.

FUNDING SOURCES

João Massano has acted as an advisor and received honoraria and financial support to speak or attend meetings from Bial, Grünenthal, Lundbeck, Novartis, and Tecnifar companies; he received educational support from Medtronic and a research grant from the Centro de Investigação Clínica, Centro Hospitalar São João (unrelated to the present work). Maria Inês Couto, Ana Oliveira, Ana Monteiro, and Nuno Lunet declare they have no conflicts of interest. This work received no specific grant from any funding agency in the public, commercial or not-for-profit sectors.

REFERENCES

- Massano J. Doença de Parkinson: atualização clínica. Acta Med Port 2011;24:S827-34.
- Deuschl G, Schade-Brittinger C, Krack P, Volkmann J, Schäfer H, Bötzel K, et al. A randomized trial of deep-brain stimulation for Parkinson's disease. N Engl J Med. 2006;355:896-908.
- Weaver FM, Follett K, Stern M, Hur K, Harris C, Marks WJ Jr, et al. Bilateral deep brain stimulation vs best medical therapy for patients with advanced Parkinson disease: a randomized controlled trial. JAMA. 2009;301:63-73.
- Williams A, Gill S, Varma T, Jenkinson C, Quinn N, Mitchell R, et al. Deep brain stimulation plus best medical therapy versus best medical therapy alone for advanced Parkinson's disease (PD SURG trial): a randomised, open-label trial. Lancet Neurol. 2010;9:581-91.
- Schuepbach WM, Rau J, Knudsen K, Volkmann J, Krack P, Timmermann L, et al. Neurostimulation for Parkinson's disease with early motor complications. N Engl J Med. 2013;368:610-22.
- Hariz MI, Rehncrona S, Quinn NP, Speelman JD, Wensing C, Multicentre Advanced Parkinson's Disease Deep Brain Stimulation Group. Multicenter study on deep brain stimulation in Parkinson's disease: an independent assessment of reported adverse events at 4 years. Mov Disord. 2008;23:416-21.
- Volkmann J, Daniels C, Witt K. Neuropsychiatric effects of subthalamic neurostimulation in Parkinson disease. Nat Rev Neurol. 2010;6:487-98.
- Massano J, Garrett C. Deep brain stimulation and cognitive decline in Parkinson's disease: a clinical review. Front Neurol. 2012;3:66.
- Funkiewiez A, Ardouin C, Caputo E, Krack P, Fraix V, Klinger H, et al. Long term effects of bilateral subthalamic nucleus stimulation on cognitive function, mood, and behaviour in Parkinson's disease. J Neurol Neurosurg Psychiatry. 2004;75:834-9.
- Witt K, Daniels C, Reiff J, Krack P, Volkmann J, Pinsker MO, et al. Neuropsychological and psychiatric changes after deep brain stimulation for Parkinson's disease: a randomised, multicentre study. Lancet Neurol. 2008;7:605-14.
- Okun MS, Fernandez HH, Wu SS, Kirsch-Darrow L, Bowers D, Bova F, et al. Cognition and mood in Parkinson's disease in subthalamic nucleus versus globus pallidus interna deep brain stimulation: the COMPARE trial. Ann Neurol. 2009;65:586-95.
- Barone P, Antonini A, Colosimo C, Marconi R, Morgante L, Avarello TP, et al. The PRIAMO study: a multicenter assessment of nonmotor symptoms and their impact on quality of life in Parkinson's disease. Mov Disord. 2009;24:1641-9.
- Gallagher DA, Lees AJ, Schrag A. What are the most important nonmotor symptoms in patients with Parkinson's disease and are we missing them? Mov Disord. 2010;25:2493-500.
- Hammarlund CS, Hagell P, Nilsson MH. Motor and non-motor predictors of illness-related distress in Parkinson's disease. Parkinsonism Relat Disord. 2012;18:299-302.
- Chaudhuri KR, Rojo JM, Schapira AH, Brooks DJ, Stocchi F, Odin P, et al. A proposal for a comprehensive grading of Parkinson's disease severity combining motor and non-motor assessments: meeting an unmet need. PLoS One. 2013;8:e57221.
- Temel Y, Kessels A, Tan S, Topdag A, Boon P, Visser-Vandewalle V. Behavioural changes after bilateral subthalamic stimulation in advanced Parkinson disease: a systematic review. Parkinsonism Relat Disord. 2006;12:265-72.
- Appleby BS, Duggan PS, Regenberg A, Rabins PV. Psychiatric and neuropsychiatric adverse events associated with deep brain stimulation: a meta-analysis of ten years' experience. Mov Disord. 2007;22:1722-8.
- McDonald LM, Page D, Wilkinson L, Jahanshahi M. Deep brain stimulation of the subthalamic nucleus improves sense of well-being in Parkinson's disease. Mov Disord. 2012;27:372-8.
- Lhomme E, Klinger H, Thobois S, Schmitt E, Ardouin C, Bichon A, et al. Subthalamic stimulation in Parkinson's disease: restoring the balance of motivated behaviours. Brain. 2012;135:1463-77.
- Zibetti M, Merola A, Rizzi L, Ricchi V, Angrisano S, Azzaro C, et al. Beyond nine years of continuous subthalamic nucleus deep brain stimulation in Parkinson's disease. Mov Disord. 2011;26:2327-34.
- Oyama G, Shimo Y, Natori S, Nakajima M, Ishii H, Arai H, et al. Acute effects of bilateral subthalamic stimulation on decision-making in Parkinson's disease. Parkinsonism Relat Disord. 2011;17:189-93.
- Nazzaro JM, Pahwa R, Lyons KE. The impact of bilateral subthalamic stimulation on non-motor symptoms of Parkinson's disease. Parkinsonism Relat Disord. 2011;17:606-9.
- Huebl J, Schoenecker T, Siebert S, Brücke C, Schneider GH, Kupsch A, et al. Modulation of subthalamic alpha activity to emotional stimuli correlates with depressive symptoms in Parkinson's disease. Mov Disord. 2011;26:477-83.

24. Auclair-Ouellet N, Chantal S, Cantin L, Prud'homme M, Langlois M, Macoir J. Transient executive dysfunction following STNDBS in Parkinson's disease. *Can J Neurol Sci.* 2011;38:360-3.
25. Altug F, Acar F, Acar G, Cavlak U. The influence of subthalamic nucleus deep brain stimulation on physical, emotional, cognitive functions and daily living activities in patients with Parkinson's disease. *Turk Neurosurg.* 2011;21:140-6.
26. Schneider F, Reske M, Finkelmeyer A, Wojtecki L, Timmermann L, Brosig T, et al. Predicting acute affective symptoms after deep brain stimulation surgery in Parkinson's disease. *Stereotact Funct Neurosurg.* 2010;88:367-73.
27. Péron J, Grandjean D, Le Jeune F, Sauleau P, Haegelen C, Drapier D, et al. Recognition of emotional prosody is altered after subthalamic nucleus deep brain stimulation in Parkinson's disease. *Neuropsychologia.* 2010;48:1053-62.
28. Kishore A, Rao R, Krishnan S, Panikar D, Sarma G, Sivasanakaran MP, et al. Long-term stability of effects of subthalamic stimulation in Parkinson's disease: Indian experience. *Mov Disord.* 2010;25:2438-44.
29. Follett KA, Weaver FM, Stern M, Hur K, Harris CL, Luo P, et al. Pallidal versus subthalamic deep-brain stimulation for Parkinson's disease. *N Engl J Med.* 2010;362:2077-91.
30. Fasano A, Romito LM, Daniele A, Piano C, Zinno M, Bentivoglio AR, et al. Motor and cognitive outcome in patients with Parkinson's disease 8 years after subthalamic implants. *Brain.* 2010;133:2664-76.
31. Zibetti M, Pesare M, Cinquepalmi A, Rosso M, Castelli L, Rizzi L, et al. Neuro-psychiatric therapy during chronic subthalamic stimulation in Parkinson's disease. *Parkinsonism Relat Disord.* 2009;15:128-33.
32. Wang X, Chang C, Geng N, Li N, Wang J, Ma J, et al. Long-term effects of bilateral deep brain stimulation of the subthalamic nucleus on depression in patients with Parkinson's disease. *Parkinsonism Relat Disord.* 2009;15:587-91.
33. Gervais-Bernard H, Xie-Brustolin J, Mertens P, Polo G, Klinger H, Adamec D, et al. Bilateral subthalamic nucleus stimulation in advanced Parkinson's disease: five year follow-up. *J Neurol.* 2009;256:225-33.
34. Denheyer M, Kiss ZH, Haffenden AM. Behavioral effects of subthalamic deep brain stimulation in Parkinson's disease. *Neuropsychologia.* 2009;47:3203-9.
35. York MK, Dulay M, Macias A, Levin HS, Grossman R, Simpson R, et al. Cognitive declines following bilateral subthalamic nucleus deep brain stimulation for the treatment of Parkinson's disease. *J Neurol Neurosurg Psychiatry.* 2008;79:789-95.
36. Schoenberg MR, Mash KM, Bharucha KJ, Francel PC, Scott JG. Deep brain stimulation parameters associated with neuropsychological changes in subthalamic nucleus stimulation for refractory Parkinson's disease. *Stereotact Funct Neurosurg.* 2008;86:337-44.
37. Montel S, Bungener C. What relation is there between deep brain stimulation and coping strategies in Parkinson's disease? *Mov Disord.* 2008;23:1780-4.
38. Merello M, Tenca E, Perez Lloret S, Martín ME, Bruno V, Cavanagh S, et al. Prospective randomized 1-year follow-up comparison of bilateral subthalamotomy versus bilateral subthalamic stimulation and the combination of both in Parkinson's disease patients: a pilot study. *Br J Neurosurg.* 2008;22:415-22.
39. Kaiser I, Krysin-Exner I, Brucke T, Volc D, Alesch F. Long-term effects of STN DBS on mood: psychosocial profiles remain stable in a 3-year follow-up. *BMC Neurol.* 2008;8:43.
40. Heo JH, Lee KM, Paek SH, Kim MJ, Lee JY, Kim JY, et al. The effects of bilateral subthalamic nucleus deep brain stimulation (STN DBS) on cognition in Parkinson disease. *J Neurol Sci.* 2008;273:19-24.
41. Castelli L, Zibetti M, Rizzi L, Caglio M, Lanotte M, Lopiano L. Neuropsychiatric symptoms three years after subthalamic DBS in PD patients: a case-control study. *J Neurol.* 2008;255:1515-20.
42. Zibetti M, Torre E, Cinquepalmi A, Rosso M, Ducati A, Bergamasco B, et al. Motor and nonmotor symptom follow-up in parkinsonian patients after deep brain stimulation of the subthalamic nucleus. *Eur Neurol.* 2007;58:218-23.
43. Witjas T, Kaphan E, Regis J, Jouve E, Chérif AA, Péragut JC, et al. Effects of chronic subthalamic stimulation on nonmotor fluctuations in Parkinson's disease. *Mov Disord.* 2007;22:1729-34.
44. Temel Y, Wilbrink P, Duits A, Boon P, Tromp S, Ackermans L, et al. Single electrode and multiple electrode guided electrical stimulation of the subthalamic nucleus in advanced Parkinson's disease. *Neurosurgery.* 2007;61:346-55.
45. Rothlind JC, Cockshott RW, Starr PA, Marks WJ Jr. Neuropsychological performance following staged bilateral pallidal or subthalamic nucleus deep brain stimulation for Parkinson's disease. *J Int Neuropsychol Soc.* 2007;13:68-79.
46. Ory-Magne F, Brefel-Courbon C, Simonetta-Moreau M, Fabre N, Lotterie JA, Chaynes P, et al. Does ageing influence deep brain stimulation outcomes in Parkinson's disease? *Mov Disord.* 2007;22:1457-63.
47. Derost PP, Ouchchane L, Morand D, Ulla M, Llorca PM, Barget M, et al. Is DBS-STN appropriate to treat severe Parkinson disease in an elderly population? *Neurology.* 2007;68:1345-55.
48. Bordini BJ, Garg A, Gallagher CL, Bell B, Garell PC. Neuropsychological effects of bilateral deep brain stimulation of the subthalamic nucleus in Parkinson's disease. *Stereotact Funct Neurosurg.* 2007;85:113-20.
49. Yamada K, Goto S, Matsuzaki K, Nagahiro S, Murase N, H Shimazu, et al. Psychiatric symptoms and subthalamic nucleus stimulation in Parkinson's disease. A retrospective study in our Japanese patients. *Neuromodulation.* 2006;9:107-14.
50. Smeding HM, Speelman JD, Koning-Haanstra M, Schuurman PR, Nijssen P, van Laar T, et al. Neuropsychological effects of bilateral STN stimulation in Parkinson disease: a controlled study. *Neurology.* 2006;66:1830-6.
51. Schadt CR, Cox KL, Tramontana MG, Byrne DW, Davis TL, Fang JY, et al. Depression and intelligence in patients with Parkinson's disease and deep-brain stimulation. *J Natl Med Assoc.* 2006;98:1121-5.
52. Perriol MP, Krystkowiak P, Defebvre L, Blond S, Destee A, Dujardin K. Stimulation of the subthalamic nucleus in Parkinson's disease: cognitive and affective changes are not linked to the motor outcome. *Parkinsonism Relat Disord.* 2006;12:205-10.
53. Kalteis K, Standhardt H, Krysin-Exner I, Brucke T, Volc D, Alesch F. Influence of bilateral STN-stimulation on psychiatric symptoms and psychosocial functioning in patients with Parkinson's disease. *J Neural Transm.* 2006;113:1191-206.
54. Houeto JL, Mallet L, Mesnage V, Tezenas du Montcel S, Béhar C, Gargiulo M, et al. Subthalamic stimulation in Parkinson disease: behavior and social adaptation. *Arch Neurol.* 2006;63:1090-5.
55. Funkiewiez A, Ardouin C, Cools R, Krack P, Fraix V, Batir A, et al. Effects of levodopa and subthalamic nucleus stimulation on cognitive and affective functioning in Parkinson's disease. *Mov Disord.* 2006;21:1656-62.
56. Drapier D, Drapier S, Sauleau P, Haegelen C, Raoul S, Biseul I, et al. Does subthalamic nucleus stimulation induce apathy in Parkinson's disease? *J Neurol.* 2006;253:1083-91.
57. De Gaspari D, Siri C, Di Gioia M, Antonini A, Isella V, Pizzolato A, et al. Clinical correlates and cognitive underpinnings of verbal fluency impairment after chronic subthalamic stimulation in Parkinson's disease. *Parkinsonism Relat Disord.* 2006;12:289-95.
58. Drapier S, Raoul S, Drapier D, Leray E, Lallement F, Rivier I, et al. Only physical aspects of quality of life are significantly improved by bilateral subthalamic stimulation in Parkinson's disease. *J Neurol.* 2005;252:583-8.
59. Capecchi M, Ricciuti RA, Burini D, Bombace VG, Provinciali L, Iacoangeli M, et al. Functional improvement after subthalamic stimulation in Parkinson's disease: a non-equivalent controlled study with 12-24 month follow up. *J Neurol Neurosurg Psychiatry.* 2005;76:769-74.
60. Morrison CE, Borod JC, Perrine K, Beric A, Brin MF, Rezaei A, et al. Neuropsychological functioning following bilateral subthalamic nucleus stimulation in Parkinson's disease. *Arch Clin Neuropsychol.* 2004;19:165-81.
61. Krause M, Fogel W, Mayer P, Kloss M, Tronnier V. Chronic inhibition of the subthalamic nucleus in Parkinson's disease. *J Neurol Sci.* 2004;219:119-24.
62. Dujardin K, Blairy S, Defebvre L, Krystkowiak P, Hess U, Blond S, et al. Subthalamic nucleus stimulation induces deficits in decoding emotional facial expressions in Parkinson's disease. *J Neurol Neurosurg Psychiatry.* 2004;75:202-8.
63. Alegret M, Valldeoriola F, Martí M, Pilleri M, Junqué C, Rumià J, et al. Comparative cognitive effects of bilateral subthalamic stimulation and subcutaneous continuous infusion of apomorphine in Parkinson's disease. *Mov Disord.* 2004;19:1463-9.
64. Troster AI, Fields JA, Wilkinson S, Pahwa R, Koller WC, Lyons KE. Effect of motor improvement on quality of life following subthalamic stimulation is mediated by changes in depressive symptomatology. *Stereotact Funct Neurosurg.* 2003;80:43-7.
65. Krack P, Batir A, Van Blercom N, Krack P, Batir A, Van Blercom N, et al. Five-year follow-up of bilateral stimulation of the subthalamic nucleus in advanced Parkinson's disease. *N Engl J Med.* 2003;349:1925-34.
66. Daniele A, Albanese A, Contarino MF, Zinzi P, Barbier A, Gasparini F, et al. Cognitive and behavioural effects of chronic stimulation of the subthalamic nucleus in patients with Parkinson's disease. *J Neurol*

- Neurosurg Psychiatry. 2003;74:175-82.
67. Simuni T, Jaggi JL, Mulholland H, Hurtig HI, Colcher A, Siderowf AD, et al. Bilateral stimulation of the subthalamic nucleus in patients with Parkinson disease: a study of efficacy and safety. *J Neurosurg.* 2002;96:666-72.
 68. Martinez-Martin P, Valdeorola F, Tolosa E, Pilleri M, Molinuevo JL, Rumià J, et al. Bilateral subthalamic nucleus stimulation and quality of life in advanced Parkinson's disease. *Mov Disord.* 2002;17:372-7.
 69. Lohr TJ, Burgunder JM, Pohle T, Weber S, Sommerhalder R, Krauss JK. Long-term pallidal deep brain stimulation in patients with advanced Parkinson disease: 1-year follow-up study. *J Neurosurg.* 2002;96:844-53.
 70. Houeto JL, Mesnage V, Mallet L, Pillon B, Gargiulo M, du Moncel ST, et al. Behavioural disorders, Parkinson's disease and subthalamic stimulation. *J Neurol Neurosurg Psychiatry.* 2002;72:701-7.
 71. Berney A, Vingerhoets F, Perrin A, Guex P, Villemure JG, Burkhard PR, et al. Effect on mood of subthalamic DBS for Parkinson's disease: a consecutive series of 24 patients. *Neurology.* 2002;59:1427-9.
 72. Volkmann J, Allert N, Voges J, Weiss PH, Freund HJ, Sturm V. Safety and efficacy of pallidal or subthalamic nucleus stimulation in advanced PD. *Neurology.* 2001;56:548-51.
 73. Perozzo P, Rizzone M, Bergamasco B, Castelli L, Lanotte M, Tavella A, et al. Deep brain stimulation of subthalamic nucleus: behavioural modifications and familiar relations. *Neurol Sci.* 2001;22:81-2.
 74. Saint-Cyr JA, Trepanier LL, Kumar R, Lozano AM, Lang AE. Neuropsychological consequences of chronic bilateral stimulation of the subthalamic nucleus in Parkinson's disease. *Brain.* 2000;123:2091-108.
 75. Fields JA, Troster AI, Wilkinson SB, Pahwa R, Koller WC. Cognitive outcome following staged bilateral pallidal stimulation for the treatment of Parkinson's disease. *Clin Neurol Neurosurg.* 1999;101:182-8.
 76. Burchiel KJ, Anderson VC, Favre J, Hammerstad JP. Comparison of pallidal and subthalamic nucleus deep brain stimulation for advanced Parkinson's disease: results of a randomized, blinded pilot study. *Neurosurgery.* 1999;45:1375-82.
 77. Ardouin C, Pillon B, Peiffer E, Bejjani P, Limousin P, Damier P, et al. Bilateral subthalamic or pallidal stimulation for Parkinson's disease affects neither memory nor executive functions: a consecutive series of 62 patients. *Ann Neurol.* 1999;46:217-23.
 78. Ghika J, Villemure JG, Fankhauser H, Favre J, Assal G, Ghika-Schmid F. Efficiency and safety of bilateral contemporaneous pallidal stimulation (deep brain stimulation) in levodopa-responsive patients with Parkinson's disease with severe motor fluctuations: a 2-year follow-up review. *J Neurosurg.* 1998;89:713-8.
 79. Trajkovic G, Starcevic V, Latas M, Leštarević M, Ille T, Bukumirić Z, et al. Reliability of the Hamilton Rating Scale for Depression: a meta-analysis over a period of 49 years. *Psychiatry Res.* 2011;189:1-9.
 80. van de Rest O, van der Zwaluw N, Beekman AT, de Groot LC, Geleijnse JM. The reliability of three depression rating scales in a general population of Dutch older persons. *Int J Geriatr Psychiatry.* 2010;25:998-1005.
 81. McPherson A, Martin CR. A narrative review of the Beck Depression Inventory (BDI) and implications for its use in an alcohol-dependent population. *J Psychiatr Ment Health Nurs.* 2010;17:19-30.
 82. Nyunt MS, Fones C, Niti M, Ng TP. Criterion-based validity and reliability of the Geriatric Depression Screening Scale (GDS-15) in a large validation sample of community-living Asian older adults. *Aging Ment Health.* 2009;13:376-82.
 83. De Ayala RJ, Vonderharr-Carlson DJ, Kim D. Assessing the reliability of the beck anxiety inventory scores. *Educ Psychol Meas.* 2005;65:836-50.
 84. Iglesias GH. Geriatric Depression Scale Short Form and Zung Self-Rating Depression Scale: A Study of Homebound Elders. *Clin Gerontol.* 2004;27:55-66.
 85. Kellett S, Beail N, Newman DW, Frankish P. Utility of the brief symptom inventory in the assessment of psychological distress. *J Appl Res Intellect Disabil.* 2003;16:127-34.
 86. Siderowf A, McDermott M, Kieburtz K, Blindauer K, Plumb S, Shoulson I. Test-retest reliability of the unified Parkinson's disease rating scale in patients with early Parkinson's disease: results from a multicenter clinical trial. *Mov Disord.* 2002;17:758-63.
 87. Bech P. The Bech-Rafaelsen Melancholia Scale (MES) in clinical trials of therapies in depressive disorders: a 20-year review of its use as outcome measure. *Acta Psychiatr Scand.* 2002;106:252-64.
 88. Baldacchino DR, Bowman GS, Buhagiar A. Reliability testing of the hospital anxiety and depression (HAD) scale in the English, Maltese and back-translation versions. *Int J Nurs Stud.* 2002;39:207-14.
 89. Gibson SJ. The measurement of mood states in older adults. *J Gerontol B Psychol Sci Soc Sci.* 1997;52:167-74.
 90. Rule WR, Traver MD. Test-retest reliabilities of State-Trait Anxiety Inventory in a stressful social analogue situation. *J Pers Assess.* 1983;47:276-7.
 91. Voon V, Krack P, Lang AE, Lozano AM, Dujardin K, Schüpbach M, et al. A multicentre study on suicide outcomes following subthalamic stimulation for Parkinson's disease. *Brain.* 2008;131:2720-8.
 92. Williams JR, Hirsch ES, Anderson K, Bush AL, Goldstein SR, Grill S, et al. A comparison of nine scales to detect depression in Parkinson disease: which scale to use? *Neurology.* 2012;78:998-1006.
 93. Storch A, Schneider CB, Wolz M, Stürwald Y, Nebe A, Odin P, et al. Nonmotor fluctuations in Parkinson disease: severity and correlation with motor complications. *Neurology.* 2013;80:800-9.