

# ***An in vitro* model to study the effect of fresh red blood cell transfusions in the phenotype of T lymphocytes**

**Padrão CA<sup>1</sup>, Esgalhado AJ<sup>1</sup>, Martinez J<sup>3</sup>, Cardoso EM<sup>1,2</sup>, Arosa F. A.<sup>1,2</sup>**

<sup>1</sup>Human Integrative Immunology, CICS-UBI – Health Sciences Research Centre;

<sup>2</sup>Faculty of Health Sciences, University of Beira Interior, Covilhã, Portugal;

<sup>3</sup>Immunohemotherapy Service, CHCB – Hospital Centre of Cova da Beira, Covilhã, Portugal

# Razão do trabalho

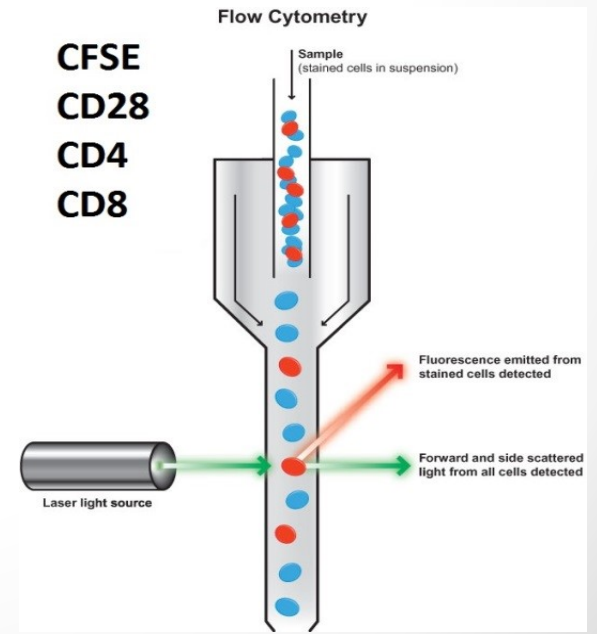
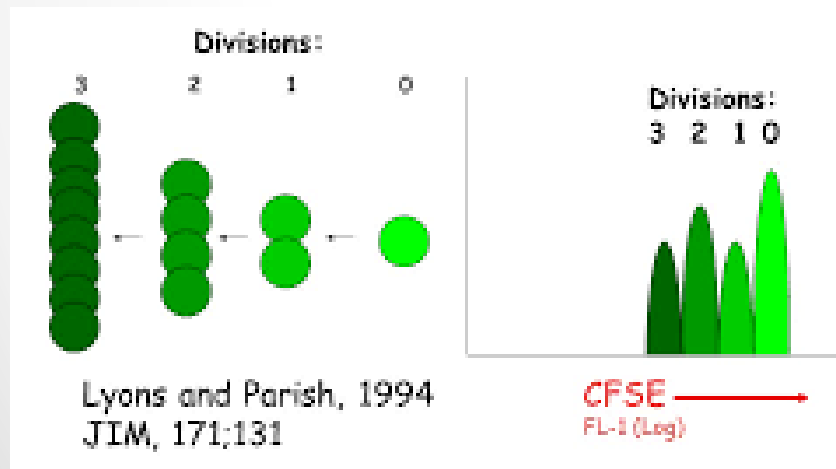
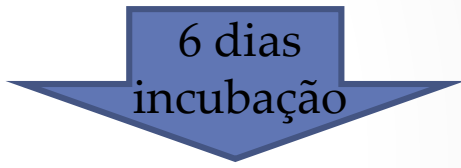
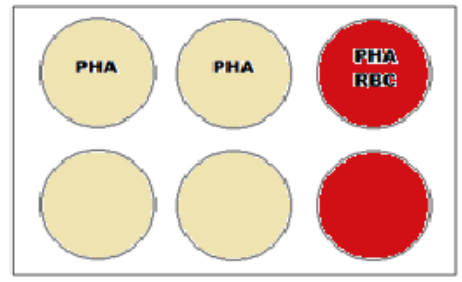
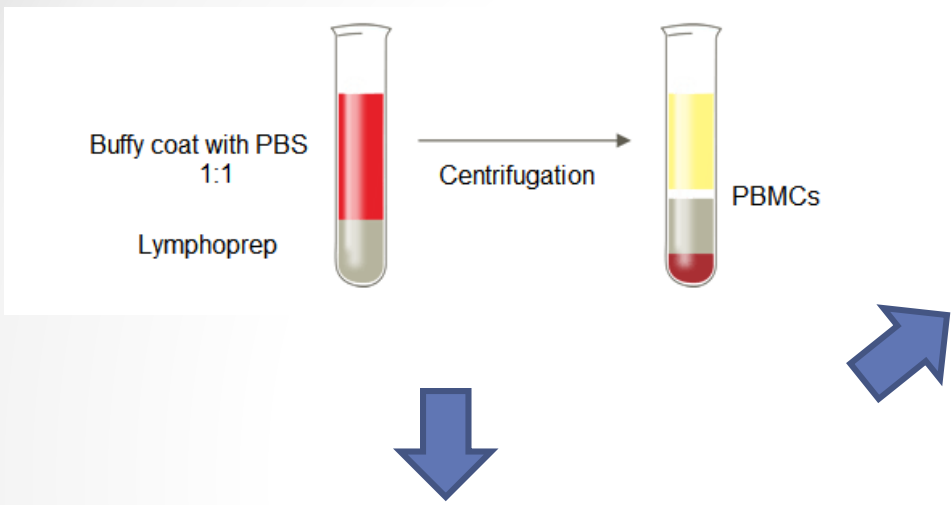
- Transfusões de concentrados eritrócitários estão associadas com efeitos imunomoduladores:

- Aumento da aceitação de exertos transplantados
- Diminui a recorrência de Doença inflamatória intestinal .

- Aumenta a incidência de:
  - Infecções
  - Metastases

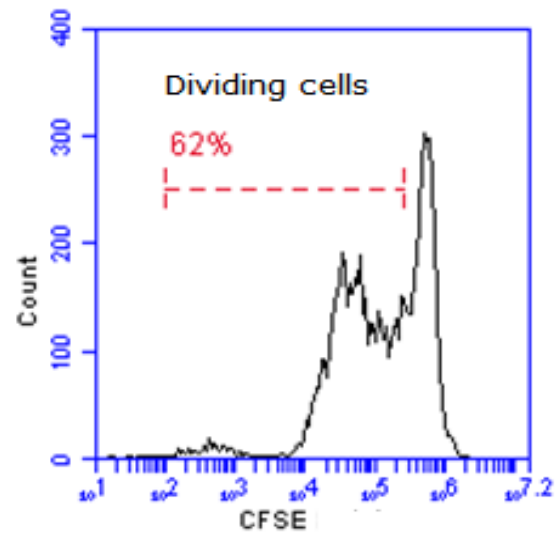
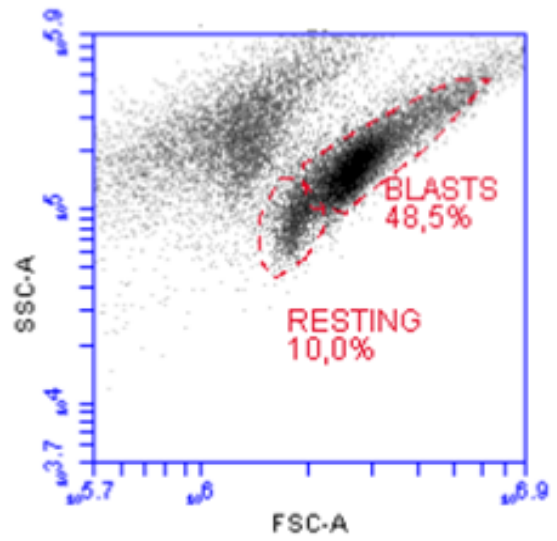
**CD8<sup>+</sup>CD28<sup>-</sup>  
T cells**

# Materials e Métodos

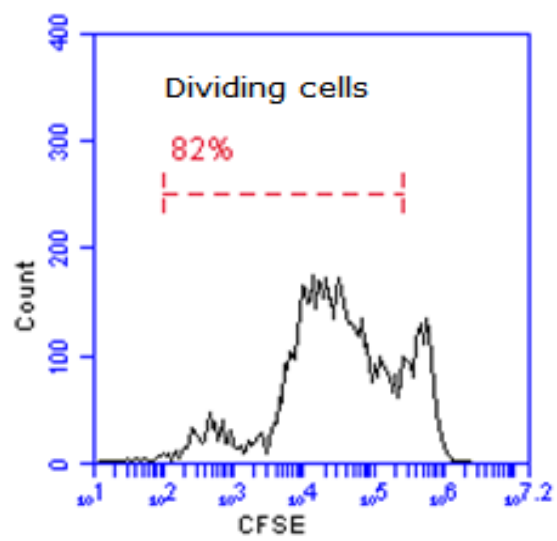
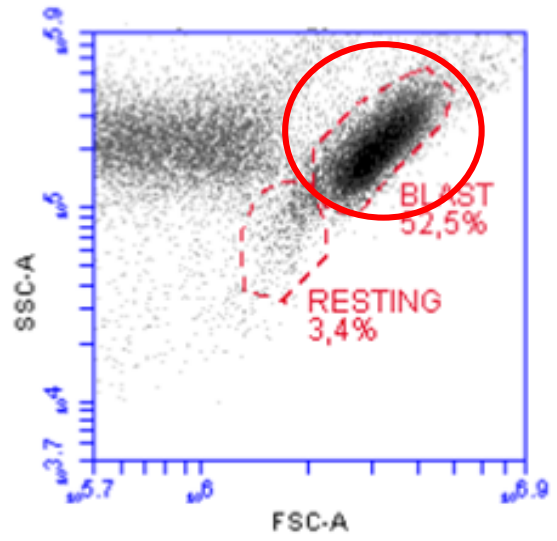


# Resultados

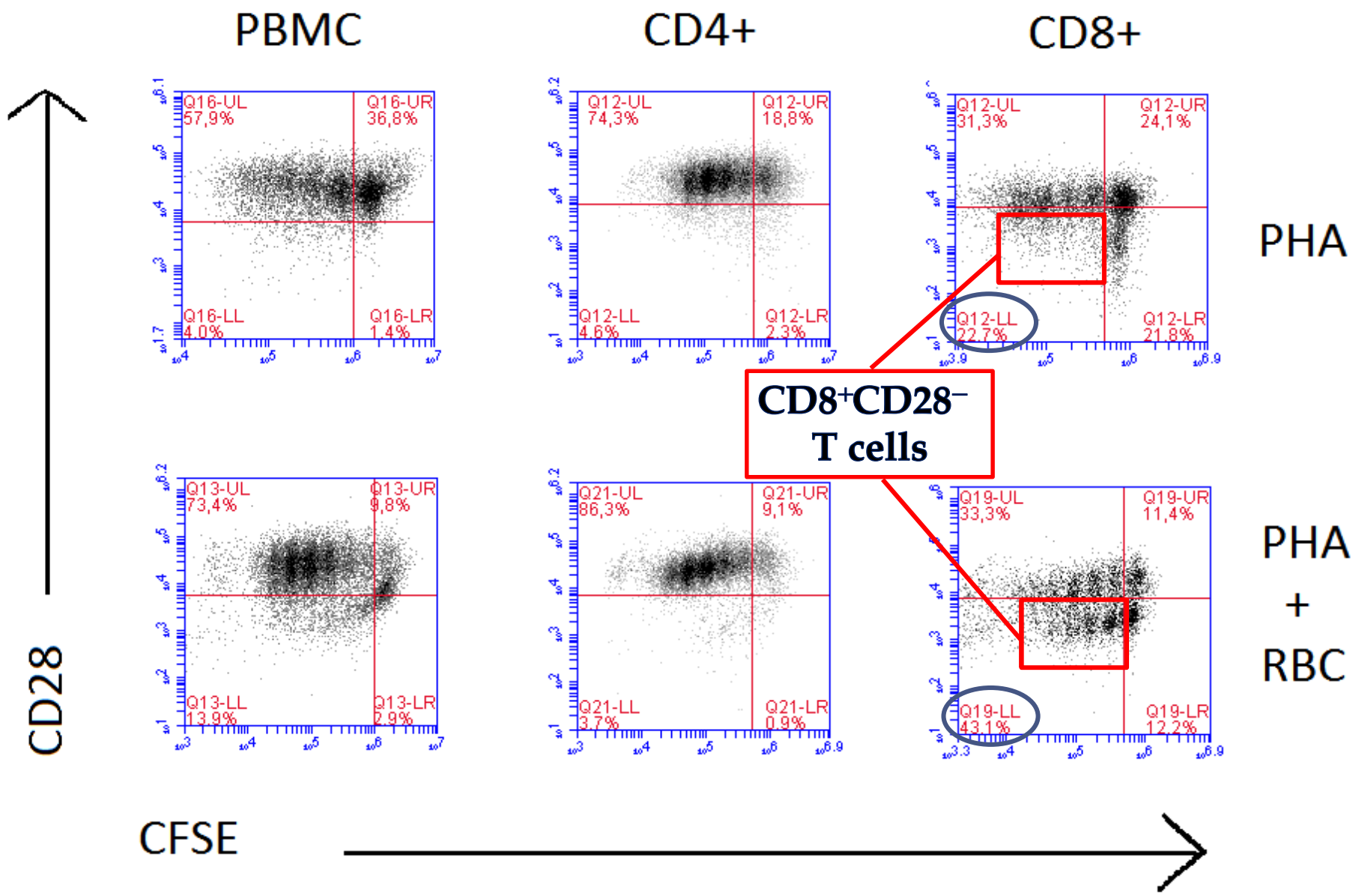
**PHA**



**PHA  
+  
RBC**



# Resultados



# Conclusões

## Os eritrócitos autólogos:

1. Aumentam a proliferação de linfócitos T CD4+ e T CD8+ ativados *in vitro*
2. Ao fim da cultura a percentagem de células T CD8+CD28– (*uma população com funções imunossupressoras*) aumenta
3. As transfusões de sangue poderão ter efeitos moduladores da componente adaptativa do sistema imunológico, pelo que deveriam ser monitorizados